

Network Switches

GWN7830 Series Layer 3 Aggregation Switch



GWN7830: 6 SFP, 4 SFP+, & 2 Gigabit ports; GWN7831: 20 SFP, 4 SFP+ Gigabit combo, 4 SFP+, optional redundant PSU; GWN7832: 12 SFP+, optional redundant PSU; All models: 6KV/4KV surge protection, QoS, Enterprise-grade security, manage via web UI, GWN.Cloud & GWN Manager

GWN7810 Series Layer 3 Managed Switch



8, 16, 24 or 48 Gigabit ports (PoE models contain 8, 16, 24 or 48 PoE ports), 2, 4 or 6 10-Gigabit SFP ports, PoE++ (GWN7813P & GWN7816P), VLAN, QoS, Enterprise-grade security, manage via web UI, GWN.Cloud & GWN Manager

GWN7800 Series Layer 2+ Managed Switch



8, 16, 24 or 48 Gigabit ports (PoE models contain 8, 16, 24 or 48 PoE ports), 2 or 4 Gigabit SFP ports, 6 Gigabit SFP+ ports (GWN7806(P)) VLAN, QoS, Enterprise-grade security, manage via web UI, GWN.Cloud & GWN Manager

GWN7700(P & PA) Series Unmanaged Switch



5, 8, 16, 24 or 48 Gigabit ports, 4-port PoE+ output (GWN7700P, GWN7701P), 8-port PoE+ output (GWN7701PA and GWN7702P),

GWN7700(M) Series Unmanaged 2.5G Multi-Gig Switch



5 and 8 multi-Gigabit copper ports, supports 100/1000/2500Mbps speeds, 1 SFP+ port with 1-Gigabit or 10-Gigabit support

Network Management

GWN.Cloud



Centralized cloud network management platform, no limit on sites or APs, mobile app available, free - www.gwn.cloud

GWN Manager GWN MANAGER



On-premise, software network management platform, local server deployment, free - grandstream.com/support/tools

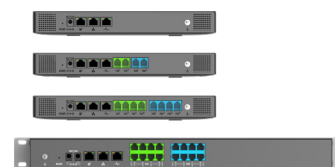
UCM6300 Ecosystem

UCM6300 Series IP PBX



Supports up to 3000 users, 450 concurrent calls, automated NAT traversal service (UCM RemoteConnect), 3x Gigabit auto-sensing RJ45 network ports, integrated PoE+, based on Asterisk* v.16, compatible with GDMS

UCM6300A Series Audio Only IP PBX



Supports up to 1500 users, 200 concurrent calls, automated NAT traversal service (UCM RemoteConnect), built-in instant messaging, based on Asterisk* v.16, compatible with GDMS

UCM RemoteConnect



Cloud based NAT firewall traversal powered by AWS, integrated with GDMS, offers secure connections with remote SIP endpoints registered to a UCM6300 series device

Wave Mobile, Desktop, & Web App



Supports Android & iOS devices, Chrome & Firefox browsers, Windows & Mac, compatible with Wi-Fi and 2G/3G/4G/5G networks, supports video resolutions up to 1080p HD, supports PC and mobile built-in cameras & USB webcams, compatible with UCM RemoteConnect

Video & Audio Conferencing

GAC2570 Conference Phone



Full-duplex speakerphone, HD acoustic chamber, 10-watt speaker, 12 omnidirectional mics, dual-band Wi-Fi 6, Bluetooth 5.0, rechargeable battery, 7" touch screen, 12-way conferencing, Android 10

GAC2500 Conference Phone



6 lines, 4.3" touch screen, 7-way conferencing support integrated Wi-Fi, Bluetooth, Android 4.4

GVC3220 Ultra HD Multimedia Conferencing System



4K Full-HD video, Android 9, integrated Wi-Fi, 5-way 1080p or 9-way 720p conferencing, 1x HDMI in, 2x HDMI out, 1x line in/out, 1x media port

GVC3210 Video Conferencing Endpoint



Supports Android, SIP and H.323 platforms, 4K video resolution, 2 HDMI outputs, Miracast screen-sharing, Bluetooth, Wi-Fi

GMD1208 Extension Microphone



Extension microphone companion for GVC3220, Ultrasound pairing technology, 8 omnidirectional MEMS with 5-meter pickup range, Bluetooth

Grandstream Device Management System



Use GDMS to provision, manage, monitor and troubleshoot Grandstream products, including device management, account management, device configuration, firmware upgrades, device monitoring, intelligent alarm, and statistical analysis, individually or in batches of devices by site, group and model.

ATAs and Gateways



HT812/814/818 Analog Telephone Adapters

2/4/8 FXS ports, 2 SIP profiles, 2 Gigabit network ports with NAT router, auto-provisioning



HT813 Analog Telephone Adapter

1 FXS port, 1 FXO port with lifeline support, 2 10/100Mbps ports, 2 SIP profiles, auto-provisioning



HT801/802 Analog Telephone Adapter

1/2 FXS ports, 1 10/100Mbps port, 1/2 SIP profiles, auto-provisioning



GXW4200 Series High Density FXS Gateways

16/24/32/48 FXS ports, 1 Gigabit network port, 4 SIP server profiles per system, independent SIP account per port



GXW4100 Series Mid-Density FXO/FXS Gateways

4/8 FXO ports, 2 SIP profiles, integrated NAT router

Facility Access

GDS3712 Video Intercom



Built-in 180° view camera, 1080p HD, mic and speaker, Weatherproof/vandal-resistant casing

GDS3710 Video Door System



Built-in 180° view camera, 1080p HD, mic and speaker, Weatherproof/vandal-resistant casing, RFID chip reader

GDS3705 Audio Door System



Built-in mic & speaker, Weatherproof/vandal-resistant casing, RFID chip reader

GDS3702 Audio Intercom



Built-in mic & speaker, Weatherproof/vandal-resistant metal casing

Intercom and PA

GSC3510 SIP Intercom Speaker/ Microphone



High-fidelity 8W speaker, 3 directional mics, advanced acoustic echo cancellation, Bluetooth, dual-band Wi-Fi, 1x 10/100 Mbps ports, PoE/PoE+, 2-pin multi-purpose input, full-band and wide-band codec support

GSC3505 1-Way Public Address SIP Speaker



High-fidelity 8W speaker, Bluetooth, dual-band Wi-Fi, 1x 10/100 Mbps ports, PoE/PoE+, full-band and wide-band codec support

GSC3516 SIP/Multicast Talk-Back Speaker



High-fidelity 15W speaker, 3 directional mics with beamforming array and 1 omnidirectional mic, advanced acoustic echo cancellation, Bluetooth, dual-band Wi-Fi, 1x 10/100 Mbps ports, PoE/PoE+, 2-pin multi-purpose input, full-band and wide-band codec support

GSC3506 SIP/Multicast Intercom Speaker



High-fidelity 30W speaker, HD acoustic chamber, 1x 10/100 Mbps ports, PoE/PoE+, full-band and wide-band codec support

GSC3570 HD Intercom & Facility Control Station



7" 1024x600 touch screen, dual-band Wi-Fi, 4 SIP accounts, 4 alarm inputs, 1 alarm output, full duplex 2-way HD audio, PoE

Full HD IP Cameras

GSC3610 HD IP Camera



Ceiling mounted fixed dome IP camera, supports motion detection, smart infrared technology, supports alert notifications, Built-in POE, IP67-level weatherproof capability, 1080p HD, primary and secondary streams

GSC3620 HD IP Camera



Weatherproof infrared (IR) ceiling-mounted dome IP camera with a 2.8mm-12mm varifocal lens, supports motion detection, smart infrared technology, Built-in POE, varifocal and auto-focus lens, IP67-level weatherproof capability



Unified Communications & Networking Solutions

For Businesses and Vertical Industries

Carrier Grade IP Phones

GRP2670



6 SIP accounts, 7" touch screen LCD, 5-way audio conferencing, 2x Gigabit ports with PoE, Wi-Fi, Bluetooth

GRP2650



6 SIP accounts, 5" LCD, 5-way audio conferencing, 2x Gigabit ports with PoE, Wi-Fi, Bluetooth

GRP2636



6 SIP accounts, 4.3" LCD, 5-way audio conferencing, 2x Gigabit ports with PoE, Wi-Fi, Bluetooth, 24 BLF keys

GRP2634



4 SIP accounts, 2.8" LCD, 5-way audio conferencing, 2x Gigabit ports with PoE, Wi-Fi, Bluetooth

GRP2624



4 SIP accounts, 2.8" LCD, 5-way audio conferencing, 2x Gigabit ports with PoE, Wi-Fi, Bluetooth, GBX20 ext. module

GRP2616



6 SIP accounts, Dual LCDs (4.3" + 2.4"), 3-way audio conferencing, 2x Gigabit ports with PoE, Wi-Fi, Bluetooth

GRP2615



5 SIP accounts, 4.3" LCD, 3-way audio conferencing, 2x Gigabit ports with PoE, Wi-Fi, Bluetooth, GBX20 ext. module

GRP2614



4 SIP accounts, Dual LCDs (2.8" + 2.4"), 3-way audio conferencing, 2x Gigabit ports with PoE, Wi-Fi, Bluetooth

GRP2613



3 SIP accounts, 2.8" LCD, 3-way audio conferencing, 2x Gigabit ports with PoE

GRP2612(P/W/G)



2 SIP accounts, 2.4" LCD, 3-way conferencing, 2x 10/100 Mbps ports, PoE (GRP2612P), Wi-Fi (GRP2612W), 2x Gigabit ports

GRP2604 (P)



6 SIP accounts, 2.48" LCD, 5-way audio conferencing, 2x Gigabit ports with PoE (GRP2604P)

GRP2603 (P)



6 SIP accounts, 2.48" LCD, 5-way audio conferencing, 2x Gigabit ports, PoE (GRP2603P)

GRP2602 (P/W/G)



4 SIP accounts, 2.21" LCD, 5-way audio conferencing, 2x 10/100 Mbps ports, PoE (GRP2602P), Wi-Fi (GRP2602W), 2x Gigabit ports (GRP2602G)

GRP2601 (P)



2 SIP accounts, 2.21" LCD, 5-way audio conferencing, 2x 10/100Mbps ports, PoE (GRP2601P)

IP Video Phones for Android

GXV3380



16 lines, 16 SIP accounts, 2x Gigabit ports, PoE, 8" touch screen, Wi-Fi, Bluetooth, Android 7.0, 2 MP camera, 1080p HD video output

GXV3370



16 lines, 16 SIP accounts, dual Gigabit ports, PoE, 7" touch screen, Wi-Fi, Bluetooth, Android 7.0, 1 MP camera, 720p HD video output

GXV3350



16 lines, 16 SIP accounts, dual Gigabit ports, PoE, 5" touch screen, Wi-Fi, Bluetooth, Android 7.0, 1 MP camera, 720p HD video output, GBX20 ext. module

GXV3480



16 lines, 16 SIP accounts, dual Gigabit ports, PoE, 8" touch screen, Wi-Fi 6, Bluetooth, Android 11, 2 MP camera, 1080p HD video output

GXV3470



16 lines, 16 SIP accounts, dual Gigabit ports, PoE, 7" touch screen, Wi-Fi 6, Bluetooth, Android 11, 2 MP camera, 720p HD video output

GXV3450



16 lines, 16 SIP accounts, dual Gigabit ports, PoE, 5" touch screen, Wi-Fi, Bluetooth, Android 11, 2 MP camera, 720p HD video output, GBX20 ext. module

High-End IP Phones

GXP2170



12 lines, 6 SIP accounts, dual Gigabit ports, PoE, 48 VPKs

GXP2160



6 lines, 6 SIP accounts, dual Gigabit ports, PoE, 24 BLF/speed dial keys, Bluetooth

GXP2140



4 lines, 4 SIP accounts, dual Gigabit ports, PoE, Bluetooth

GXP2130



8 lines, 4 SIP accounts, dual Gigabit ports, PoE, 32 VPKs, Bluetooth

GXP2135



3 lines, 3 SIP accounts, dual Gigabit ports, PoE, 8 BLF/speed dial keys, Bluetooth

Basic IP Phones

GXP1630



3 lines/SIP accounts, dual Gigabit ports, PoE, 8 BLF/speed dial keys

GXP1628



2 lines/SIP accounts, dual Gigabit ports, PoE, 8 BLF/speed dial keys

GXP1620/1625



2 lines/SIP accounts, dual 10/100Mbps ports, PoE (GXP1625)

GXP1610/1615(P)



2 lines, 1 SIP account, dual 10/100Mbps ports, PoE (GXP1610P/1615)

Cordless IP Phones

WP825
Wi-Fi IP Phone



Ruggedized, waterproof, 2 lines, 2 SIP accounts, dual-band Wi-Fi, Bluetooth, 8 hr talk time

WP822
Wi-Fi IP Phone



2 lines, 2 SIP accounts, dual-band Wi-Fi, Bluetooth, 8 hr talk time

WP820
Wi-Fi IP Phone



2 lines, 2 SIP accounts, dual-band Wi-Fi, Bluetooth, 7.5 hr talk time

WP810
Wi-Fi IP Phone



2 lines, 2 SIP accounts, dual-band Wi-Fi, Bluetooth, 7.5 hr talk time

DP730/DP722/DP720
DECT Handsets



10 line / 10 SIP accounts

DP752/DP750
DECT Base Stations



Up to 400m range outdoors and 50m range indoors

DP760
DECT repeater



Extends range an additional 300m outdoors, 50m indoors

Hotel Phones

GHP621(W)



2 lines, 2 SIP accounts, dual-band Wi-Fi (GHP621W), 1x 100Mbps port (GHP621)

GHP620(W)



2 lines, 2 SIP accounts, dual-band Wi-Fi (GHP620W), 1x 100Mbps port (GHP620)

GHP611(W)



2 lines, 2 SIP accounts, dual-band Wi-Fi (GHP611W), 1x 100Mbps port (GHP611)

GHP610(W)



2 lines, 2 SIP accounts, dual-band Wi-Fi (GHP610W), 1x 100Mbps port (GHP610)

Extension Modules

GBX20

Backlit LCD, 40 BLF/speed dial keys per module, works with GRP2615, GRP2624, GRP2670 and GXV3350

GXP2200 EXT

Backlit LCD, 40 BLF/speed dial keys per module, supported by GXP2140, GXP2170 and GXV3240

Wi-Fi Access Points

GWN7664



Wi-Fi 6, 4x4:4 MUMIMO, 750 clients, 3.55Gbps, 175m range

GWN7664LR



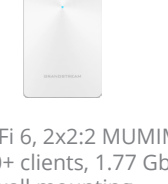
Wi-Fi 6, 4x4:4 MUMIMO, 750 clients, 3.55Gbps, 300m range

GWN7662



Wi-Fi 6, 4x4:4 MUMIMO, 256 clients, 5.38 Gbps, 175m range

GWN7661



Wi-Fi 6, 2x2:2 MUMIMO, 500+ clients, 1.77 Gbps, in-wall mounting

GWN7660



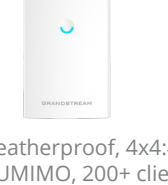
Wi-Fi 6, 2x2:2 MUMIMO, 250+ clients, 2.33 Gbps, 175m range

GWN7660LR



Wi-Fi 6, 2x2:2 MUMIMO, 256 clients, 1.77 Gbps, 250m range

GWN7630LR



Weatherproof, 4x4:4 MUMIMO, 200+ clients, 2.33 Gbps, 300m range

GWN7630



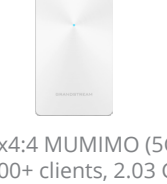
4x4:4 MUMIMO, 200+ clients, 2.33 Gbps, 175m range

GWN7625



4x4:4 MUMIMO (5Ghz), 200+ clients, 2.03 Gbps, 165m range

GWN7624



4x4:4 MUMIMO (5Ghz), 250+ clients, 2.03 Gbps, in-wall mounting

GWN7615



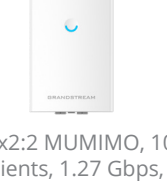
3x3:3 MUMIMO, 250+ clients, 1.75 Gbps, 175m range

GWN7605



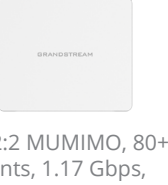
2x2:2 MUMIMO, 100+ clients, 1.27 Gbps, 165m range

GWN7605LR



2x2:2 MUMIMO, 100+ clients, 1.27 Gbps, 250m range

GWN7602



2x2:2 MUMIMO, 80+ clients, 1.17 Gbps, 100m range

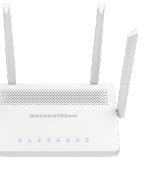
Routers

GWN7062
Wi-Fi 6 Router



Dual-band Wi-Fi 6, 1.77Gbps, 256 concurrent clients, VPN, Mesh, firewall Bluetooth

GWN7052(F)
Wi-Fi Router



Dual-band Wi-Fi, 1.27Gbps, 100 concurrent clients, VPN, Mesh, firewall, 1x SFP WAN port (GWN7052F)

GWN7003
Wired Router



9 Gigabit ports, 2 Gigabit SFP ports (all ports WAN/LAN configurable), VPN, Built-in firewall, 2.2 Gbps, Manage up to 150 GWN APs

GWN7002
Wired Router



4 Gigabit ports, 2 Gigabit SFP ports (all ports WAN/LAN configurable), VPN, Built-in firewall, 2.2 Gbps, Manage up to 100 GWN APs

GWN7001
Wired Router



6 Gigabit ports (all ports WAN/LAN configurable), VPN, Built-in firewall, 2.2 Gbps, Manage up to 100 GWN APs

www.grandstream.com



OFFICE LOCATIONS

NORTH AMERICA

Corporate Headquarters
126 Brookline Ave, 3rd Floor
Boston, MA, USA 02215

California
17059 Green Drive
City of Industry, CA, USA 91745

Dallas
2301 W. Plano Pkwy, Suite 208
Plano, TX, USA 75075

ASIA

Shenzhen, China
Hangzhou, China
Kuala Lumpur, Malaysia

EUROPE, MIDDLE EAST & AFRICA

Casablanca, Morocco

LATIN AMERICA

Valencia, Venezuela